

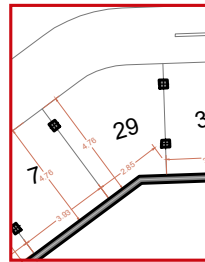
HOUSE N.29 (TYPE D) 2ND FLOOR - BLOCK 1

THE IMAGES REFER TO APPROXIMATE SOLUTIONS AND ARE NOT BINDING WITH THE FINAL PROJECT

3RD FLOOR TYPE C



1 X BASEMENT PARKING



BUILT SURFACE 99,00 M2

LIVING ROOM KITCHEN 37,20 M2

BEDROOM 1 13,80 M2

BEDROOM 2 11,70 M2

BATHROOM 1 4,10 M2

BATHROOM 2 4,15 M2

CORRIDOR 1,65 M2

COVERED TERRACE 50%% 8,00 M2

TOTAL USABLE SURFACE 80,60 M2

